

OVAL INTL.

OVALMATIC®

MODEL

9500

UNITYER®

A decorative graphic consisting of numerous thin, dark green lines that curve and flow across the bottom half of the page, creating a sense of motion and depth.

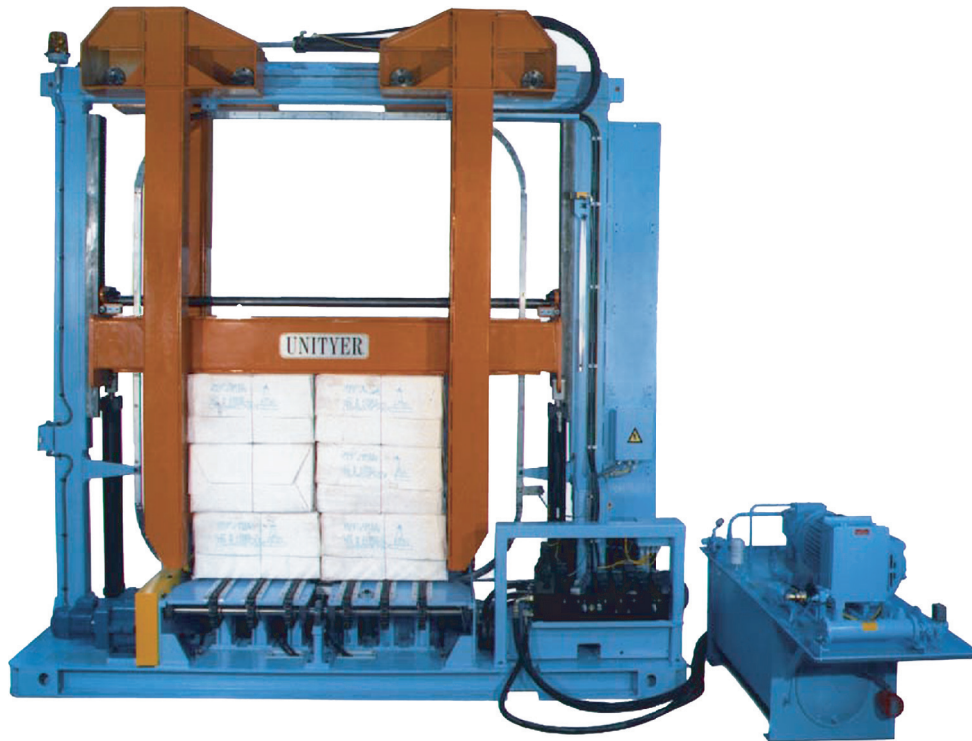
MODEL

9500

OVALMATIC® UNITYER®

FEATURES AND BENEFITS

OVAL^{INTL.}



Heavy duty frame built to withstand industrial environments

Low Friction Track- Proven low friction passive track design requires no lubricants- no contamination of pulp

High efficiency designed feed and tension system

Easy to thread Wire Dispenser minimizes tangles

Ovalmatic® floating wire gripper has a unique maintenance-friendly, spring load design and is easily accessible

Precision wire tension proven reliable in all operating conditions

Simple, single stroke, direct-acting twister head

Self-monitoring control system

Single conveyor drive uses SEW gear motor allows precise pulp alignment

Top compactor equalizes down force using a rack and pinion arrangement and Side Compactor is centered on pulp bales- no sideways dragging of units



MODEL

9500

OVALMATIC® UNITYER®

STANDARD SPECIFICATIONS



TYING WIRE RECOMMENDED	Ovalmatic® Quality Unitizing Wire (sized to meet customer's product requirements)
CONVEYOR	Chain conveyor-powered forward reverse
HYDRAULICS	Self-contained hydraulic power unit using Parker directional valves and Oil Gear axial piston pump
COMPACTING FORCES	TOP COMPACTOR. 19,050 kgf. (42,000 lbs.) standard, 29,937 kgf (65,000 lbs.) maximum SIDE COMPACTOR. 3,084 kgf (6,800 lbs.) standard, 3,416 kgf (7,532 lbs.) maximum
ELECTRICAL SERVICE	UNITYER TYING MACHINE. 208-575 VAC, 3PH, 50/60 Hz, 5KVA COMPACTING STATION. 208-575 VAC, 3PH, 50/60 Hz Excluding conveyor and hydraulic unit power requirements
ELECTRICAL MOTORS	CONVEYOR DRIVE. 2.15 kW (2 HP) 208-575 VAC, 3 PH, 50/60 Hz reversible SEW gear motor HYDRAULIC UNIT. 30 kW (40 HP) SEW pump motor, 0.4 kW (0.5 HP) heat exchanger motor, 1.5 kW tank heater All motors are supplied with equipment. Motors, Starters, Variable frequency conveyor drives, hydraulic unit motor starters and tank heater contractor are customer supplied.
ELECTRICAL INTERLOCKS	Discrete I/O interlocks. Optional interlocks are available.
ELECTRICAL CONTROL	Allen Bradley Programmable Controller CONTROL VOLTAGE. 24 VDC Optional controllers available.
ELECTRICAL COMPONENTS	All components meet CE/UL/CSA standards
ELECTRICAL WIRING	PROXIMITY SWITCHES. 0.21 - 0.33 mm ² (24-22 AWG) stranded cable STANDARD. 1.31 mm ² (16 AWG) stranded cable PRIMARY. 3.31 mm ² (12 AWG) stranded cable
COOLING	Air/oil OPTIONAL. water/oil
PNEUMATICS	Required only for auto air blast feature and wire tension control 5.5-6.9 Bar, 28 L/min, (80-100PSIG, 1 SCFM)
MACHINE WEIGHT	8,181 kg (18,000 lbs)
HYDRAULIC UNIT WEIGHT	1,182 kg (2,600 lbs) with hydraulic fluid
MACHINE HEIGHT	4,064 mm (160 in.) standard
MACHINE LENGTH	1,372 mm (54 in.) conveyor gap
MACHINE WIDTH	4,572 mm (180 in.) excluding oil carrier
STANDARD CONVEYOR HEIGHT	585 mm (23 in.) minimum
COMPACTOR OPENINGS	TOP COMPACTOR. Up. 2,686 mm (105-3/4 in.) Down. 1,403 mm (55-1/4 in.) SIDE COMPACTOR. Side Out. 2,057 mm (81 in.) Side In. 991 mm (39 in.) Optional compactor ranges available.

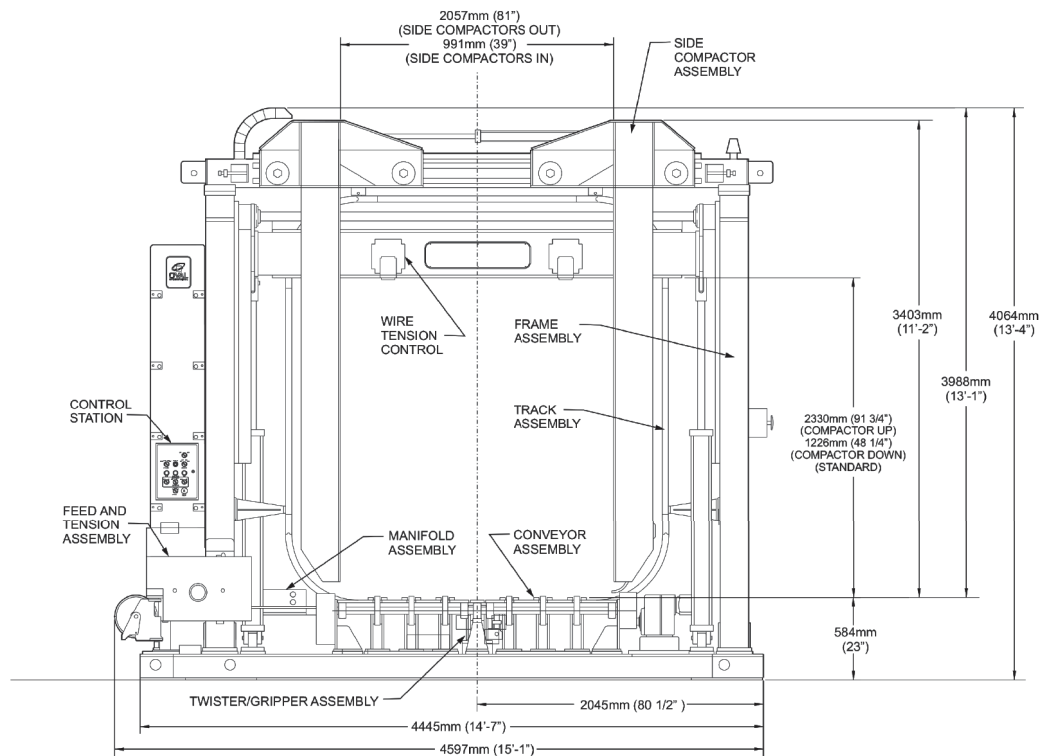
MODEL

9500

OVALMATIC® UNITYER®

STANDARD ARRANGEMENT

OVAL^{INTL.}



UNITIZING BENEFITS

SAFETY

- 4:1 safety factor
- Stable stacking in ship cargo holds

COST SAVINGS

- Minimal disposable packaging needed
- No additional dunnage
- High speed loading and discharge
- Significantly reduces damage claims

EFFICIENCY

- Lifting of multiple units
- Easy attachment and automatic unhooking of lifting devices.

RECYCLABLE

- Easily recyclable galvanized wire
- No pulp contamination
- Test documentation support available